

## The Best Probes

-Featured for Your Scientific Research



Dear Friends,

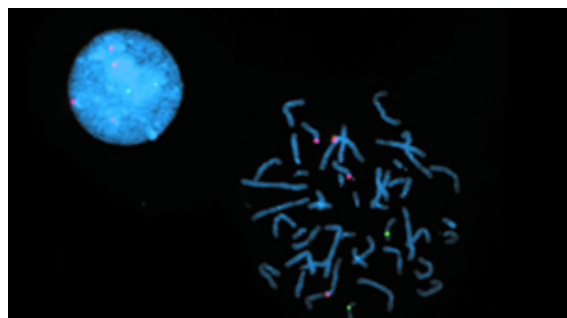
AcceGen's FISH probes are designed for the identification of genetic aberrations e.g. translocations, deletions, amplifications, and chromosomal aneuploidies by Fluorescence in situ Hybridization (FISH) in tissue sections, cell samples, blood or bone marrow smears, and metaphase chromosome spreads.

### Probes:

Whole Chromosome Painting Probes  
Chromosome Specific Centromere Probes  
Enumeration Probes  
Telomere Probes  
Prenatal Probes  
Microdeletion Probes  
Hematology Probes  
Animal Probes

### Advantages:

- ◆ Rapid, sensitive, and specific detection and characterization of chromosome abnormalities.
- ◆ Ability to test metaphase chromosomes from cultured samples and interphase cells from specimens that cannot be cultured.
- ◆ Dual colored probes for most microdeletions.



If you have any special needs in probes, please contact us at [info@accegen.com](mailto:info@accegen.com) or 1-323-369-5616. Let us know what you need and we will accommodate you. We look forward to working with you in the future.

Warmest regards,  
**Sophia L. Leighton**

**AcceGen Biotech**  
7220 Rosemead Blvd, Suite 202-10,  
San Gabriel, CA 91775, USA  
T: [+1-323-369-5616](tel:+13233695616) |  
E: [info@accegen.com](mailto:info@accegen.com)  
F: [+1-323-978-5598](tel:+13239785598) |  
Homepage: [www.accegen.com](http://www.accegen.com)